

Using Blender to Generate Datasets of Procedural SDF Models for Robot Learning Research in Gazebo

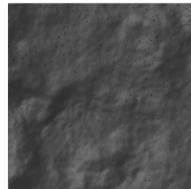
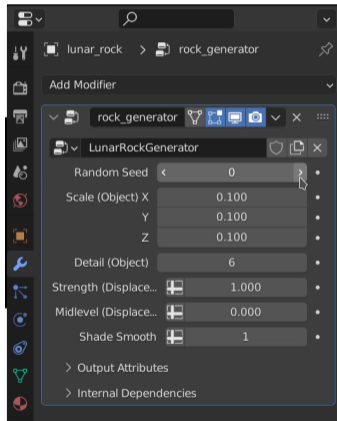
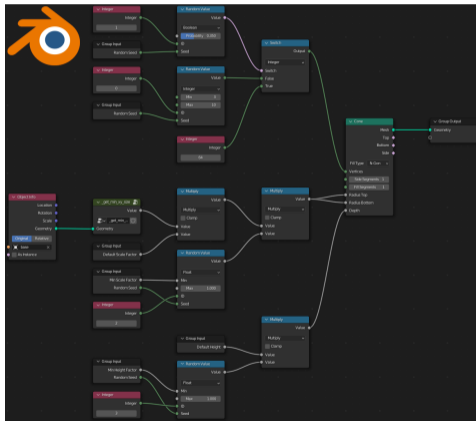
Pull Request: github.com/gazebosim/gz-sim/pull/1412

Andrej Orsula

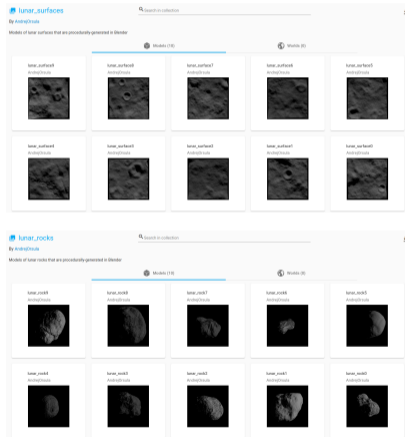
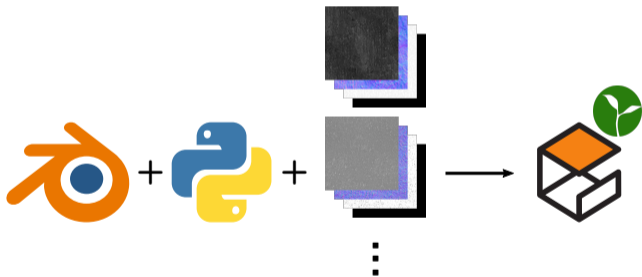
Doctoral Researcher
University of Luxembourg



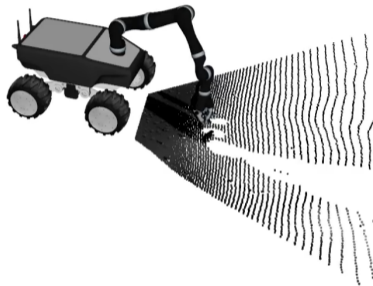
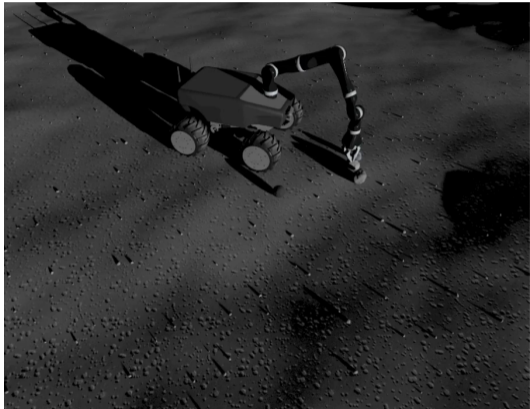
Blender's Geometry Nodes





Generator of SDF Model Datasets (Python Script)

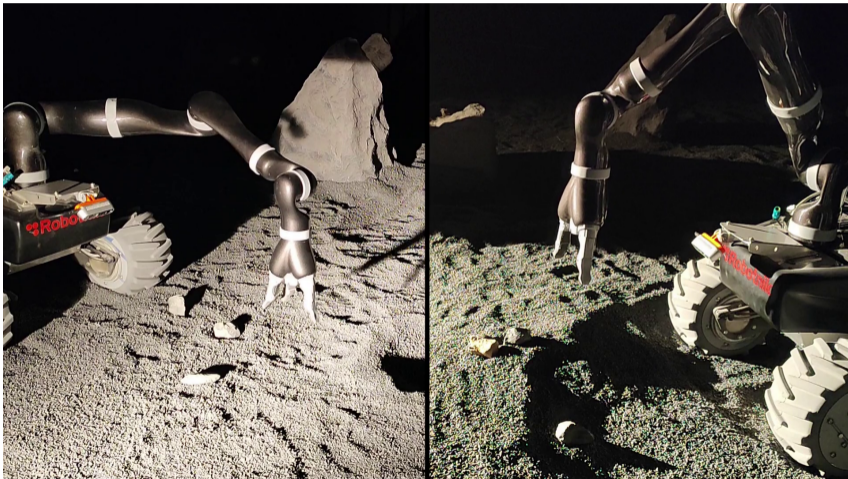


Use Case – Learning to Grasp on the Moon (Training)



 GAZEBO Fortress |  MoveIt2 Galactic

Use Case – Learning to Grasp on the Moon (Sim2Real)



More information: github.com/gazebo/gz-sim/pull/1412



andrej.orsula@uni.lu