

Performance

Metrics

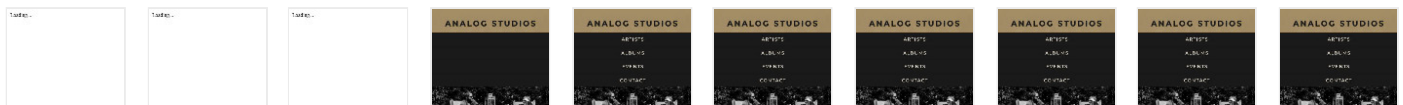


<p>First Contentful Paint</p> <p>2.7 s</p>	<p>▲ Time to Interactive</p> <p>9.6 s</p>
<p>Speed Index</p> <p>3.8 s</p>	<p>▲ Total Blocking Time</p> <p>3,550 ms</p>
<p>▲ Largest Contentful Paint</p> <p>10.4 s</p>	<p>▲ Cumulative Layout Shift</p> <p>0.596</p>

Values are estimated and may vary. The [performance score is calculated](#) directly from these metrics. [See calculator.](#)

[View Original Trace](#)

[View Treemap](#)



Show audits relevant to: All FCP LCP TBT CLS

Opportunities — These suggestions can help your page load faster. They don't [directly affect](#) the Performance score.

Opportunity	Estimated Savings
▲ Eliminate render-blocking resources	1.48 s
▲ Reduce unused JavaScript	1.35 s
Properly size images	0.6 s
Serve images in next-gen formats	0.15 s

Diagnostics — More information about the performance of your application. These numbers don't [directly affect](#) the Performance score.

▲ Ensure text remains visible during webfont load	▼
▲ Image elements do not have explicit <code>width</code> and <code>height</code>	▼
▲ Serve static assets with an efficient cache policy — 8 resources found	▼
▲ Minimize main-thread work — 4.5 s	▼
▲ Reduce JavaScript execution time — 3.6 s	▼
○ Avoid chaining critical requests — 5 chains found	▼
○ Keep request counts low and transfer sizes small — 15 requests • 1,258 KiB	▼
○ Largest Contentful Paint element — 1 element found	▼
○ Avoid large layout shifts — 5 elements found	▼
○ Avoid long main-thread tasks — 5 long tasks found	▼
Passed audits (25)	▼



Accessibility

These checks highlight opportunities to [improve the accessibility of your web app](#). Only a subset of accessibility issues can be automatically detected so manual testing is also encouraged.

Names and labels — These are opportunities to improve the semantics of the controls in your application. This may enhance the experience for users of assistive technology, like a screen reader.

▲ Buttons do not have an accessible name	▼
▲ Image elements do not have <code>[alt]</code> attributes	▼

Navigation — These are opportunities to improve keyboard navigation in your application.

▲ Heading elements are not in a sequentially-descending order ▼

Additional items to manually check (10) — These items address areas which an automated testing tool cannot cover. ▼
Learn more in our guide on [conducting an accessibility review](#).

Passed audits (11) ▼

Not applicable (30) ▼



Best Practices

Trust and Safety

▲ Links to cross-origin destinations are unsafe ▼

○ Ensure CSP is effective against XSS attacks ▼

General

○ Detected JavaScript libraries ▼

▲ Missing source maps for large first-party JavaScript ▼

Passed audits (14) ▼

Not applicable (1) ▼



SEO

These checks ensure that your page is following basic search engine optimization advice. There are many additional factors Lighthouse does not score here that may affect your search ranking, including performance on [Core Web Vitals](#). [Learn more](#).

Content Best Practices — Format your HTML in a way that enables crawlers to better understand your app's content.

- ▲ Image elements do not have `[alt]` attributes
- Additional items to manually check (1) — Run these additional validators on your site to check additional SEO best practices.
- Passed audits (11)
- Not applicable (2)



Progressive Web App

These checks validate the aspects of a Progressive Web App. [Learn more.](#)

Installable

- ▲ Web app manifest or service worker do not meet the installability requirements — 1 reason

PWA Optimized

- ▲ Does not register a service worker that controls page and `start_url`
- Redirects HTTP traffic to HTTPS
- ▲ Is not configured for a custom splash screen **Failures: No manifest was fetched.**
- ▲ Does not set a theme color for the address bar. **Failures: No manifest was fetched.**
- Content is sized correctly for the viewport
- Has a `<meta name="viewport">` tag with `width` or `initial-scale`
- Provides a valid `apple-touch-icon`
- ▲ Manifest doesn't have a maskable icon **No manifest was fetched**

- Additional items to manually check (3) — These checks are required by the baseline [PWA Checklist](#) but are not automatically checked by Lighthouse. They do not affect your score but it's important that you verify them manually.

Runtime Settings

URL

<https://www.analogstudios.net/>

Fetch Time	Jan 9, 2022, 12:43 PM EST
Device	Emulated Moto G4
Network throttling	150 ms TCP RTT, 1,638.4 Kbps throughput (Simulated)
CPU throttling	4x slowdown (Simulated)
Channel	devtools
User agent (host)	Mozilla/5.0 (Macintosh; Intel Mac OS X 10_15_7) AppleWebKit/537.36 (KHTML, like Gecko) Chrome/96.0.4664.110 Safari/537.36
User agent (network)	Mozilla/5.0 (Linux; Android 7.0; Moto G (4)) AppleWebKit/537.36 (KHTML, like Gecko) Chrome/94.0.4590.2 Mobile Safari/537.36 Chrome-Lighthouse
CPU/Memory Power	1249
Axe version	4.2.3

Generated by **Lighthouse** 8.5.0 | [File an issue](#)